

Sponsored by



## Network for basic and applied Stem Cell Research in Germany

### Mission

The German Stem Cell Network (GSCN) aims at creating synergies between all areas of basic and applied stem cell research and to provide an interface between science, education, politics and society as a whole.

### Membership

The German Stem Cell Network (GSCN) is a member-driven initiative. Students, Juniors and PIs will be heard. Besides of natural persons also research institutes and companies in the field of stem cell research in the German market are invited to become members and shape the work of the GSCN.

### Annual membership fee:

Full member	120 €
Junior member	40 €
Institute member	900 €
Company member (< 20)	500 €
Company member (> 20)	1800 €

(The fee for company members is depending on the number of fulltime employees.)

### Contact



#### GSCN central office

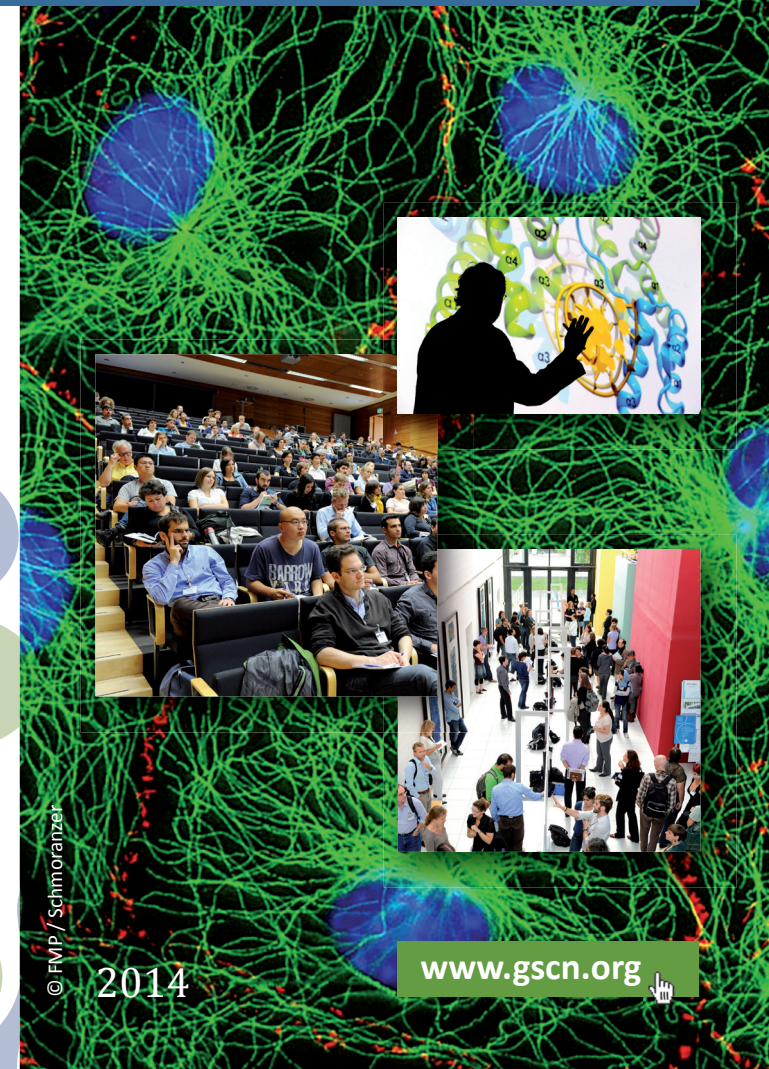
Dr. Daniel Besser, Managing Director  
Ulrike Papra, Assistant

German Stem Cell Network (GSCN) e.V.  
Max Delbrück Center  
Robert-Rössle-Straße 10  
13125 Berlin, Germany

phone: +49 (0)30.9406-2487/-2488  
fax: +49 (0)30.9406-2486

e-mail: [gscn.office@mdc-berlin.de](mailto:gscn.office@mdc-berlin.de)  
web: [www.gscn.org](http://www.gscn.org)

Collaboration with



## Synopsis

The central task of the GSCN is to pool the expertise in stem cell research in Germany and develop synergies between basic research, regenerative medicine and pharmacology. The initiative will promote innovative research activities on a national and international level. In addition, targeted information and events will be offered to encourage the public discourse on stem cell research.

## Working groups

### Scientific working groups

- Pluripotency and re-programming
- Somatic stem cells and development
- Stem cells in diseases (cancer SC)
- SC in regenerative therapies
- SC in disease modeling & drug dev.
- Computational stem cell research

### Strategic working groups

- Funding programs & policies
- Career development
- Clinical trials and regulatory affairs
- Outreach programs
- Patient information
- Stem cell technologies

Information also at: [www.gscn.org](http://www.gscn.org)

## Goals of the GSCN

- To establish an organizational structure for a German network for basic and applied stem cell research;
- To organize joint annual conferences on stem cell research to be rotated among German cities;
- To establish scientific and strategic working groups;
- To launch a web-based platform for communication on stem cell research (in German and English), enabling exchange of important news, discussions, and networking between scientists, institutions, policy-makers and the general public;
- To publish documents about basic and applied stem cell research in Germany and help organize public meetings and outreach programs on these topics.

## SAVE THE DATE!

### 2<sup>nd</sup> International Annual GSCN Conference

November 3 -5, 2014

German Cancer Research Center (DKFZ), Heidelberg  
[www.dkfz.de](http://www.dkfz.de)

→ **Abstract submission deadline: July 31, 2014**

This will be the 2<sup>nd</sup> International Annual GSCN Conference of the GSCN and will cover the latest topics in basic and applied stem cell research. The conference aims to provide a forum for scientists to present their work and a great number of oral presentations will be selected from the abstracts.

### Further information

[www.gscn.org](http://www.gscn.org)  
[gscn.office@mdc-berlin.de](mailto:gscn.office@mdc-berlin.de)

## Executive Board:

### Acting President

**Andreas Trumpp**

German Cancer Research Center Heidelberg

### Designated President

**Thomas Braun**

Max Planck Institute for Heart and Lung Research, Bad Nauheim

### Senior and Founding President

**Oliver Brüstle**

University of Bonn Medical School

### Treasurer

**Michael Cross**

University of Leipzig

### Assessor

**Frank Emmrich**

University of Leipzig

## Extended Board:

**Tobias Cantz**

Hannover Medical School

**Micha Drukker**

Helmholtz Zentrum München

**Magdalena Götz**

Helmholtz Center Munich,  
University of Munich Medical School (LMU)

**Ira Herrmann**

Stem Cell Network North Rhine Westphalia

**Jürgen Hescheler**

University of Cologne Medical School

**Ulrich Martin**

Hannover Medical School

**Ana Martin-Villaba**

German Cancer Research Center Heidelberg

**Albrecht Müller**

University of Würzburg

**Hans Schöler**

Max Planck Institute for Molecular Biomedicine

**Elly Tanaka**

Center for Regenerative Therapies Dresden (CRTD)

**Mathias Treier**

Max Delbrück Center for Molecular Medicine Berlin (MDC)